

Product information leaflet



Product information 201007

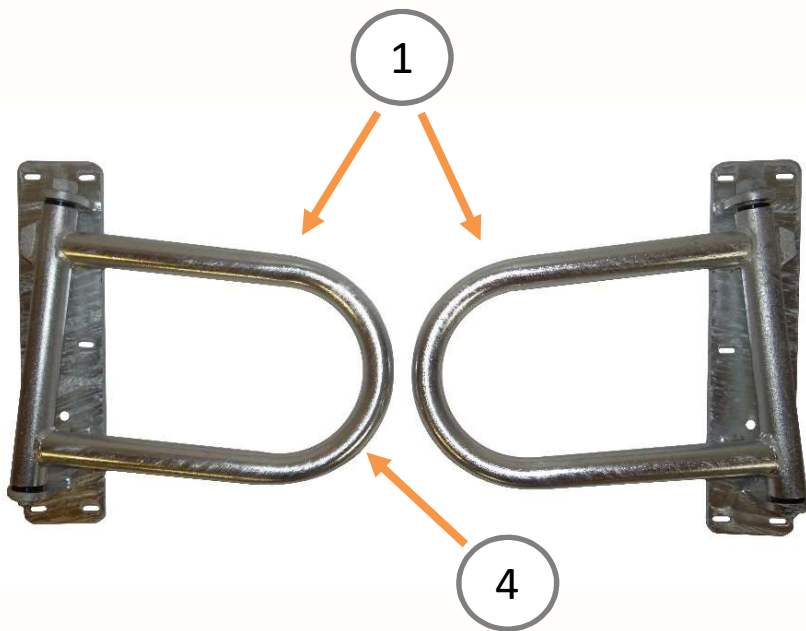


201007

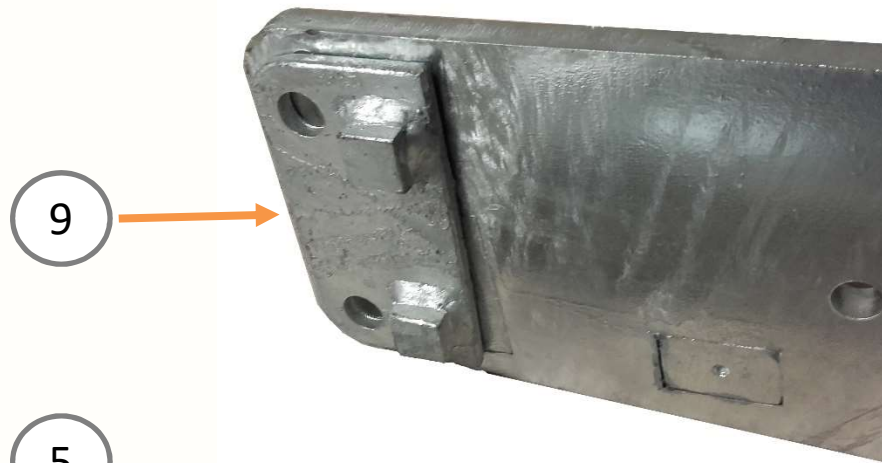
Texas fence
W = 1000 mm
Can be mounted to
1½" 2" 2½" pipe

Product information 201007

- 1) Doors are identical left and right
- 2) Smooth edges on the side of the door
- 3) Smooth edges on top of the hinge pen M22 nut
- 4) Hole on bottom of bracket
- 5) Suitable to mount against 3 sizes of pipe
- 6) 2 Extra holes to reinforce it with a M12 bolt
- 7) Can also be mounted to the wall, back is flat
- 8) Steel plates are 10 mm and lasercut
- 9) Can extra be added with adapter plates



Product information 201007



U-bolt M10 size 1½"



U-bolt M10 size 2"



U-bolt M10 size 2½"



Product information 201120

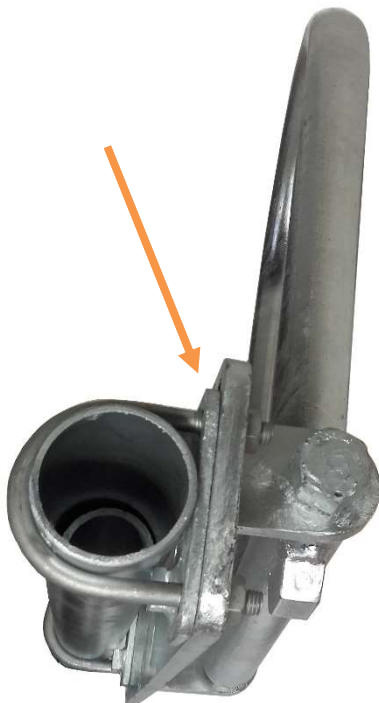


201120

Adapter plate 2"
Thickness plate = 5 mm

Can be used in
combination with
201007 and 201017

Fitted for U-bolts M10



Mounting position
adapter plate

Has 2 functions:
Prevents turning and
creates free space
to help to mount
T-clamps

This is available for
1½" 2" 2½" pipe

Can be used in
combination with
201007 and 201017



Contact



dlc

**Winterdijk 10
5161PH Sprang-Capelle
The Netherlands**

Contact

T. +31 6 24 12 06 05

E. info@dlc-bv.com